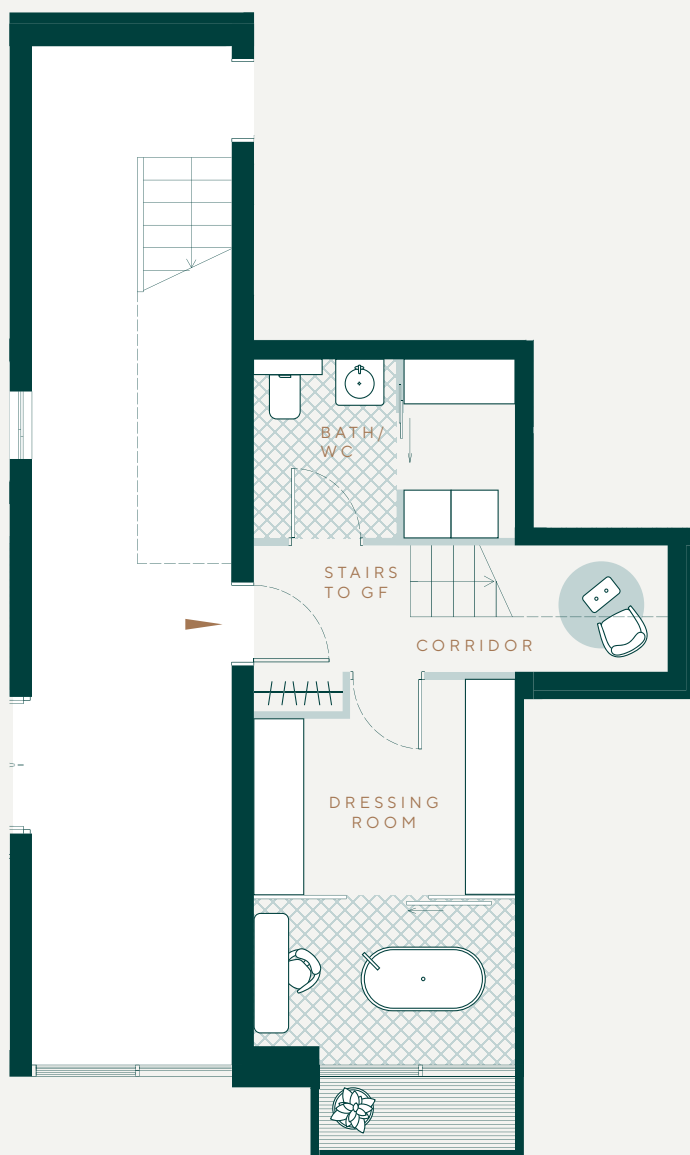




VILLA TANNENBERG

BERLIN

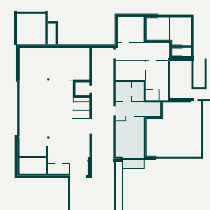
FLOOR PLANS



LOCATION IN PROPERTY



FLOOR PLAN



BSMT

APARTMENT N°2

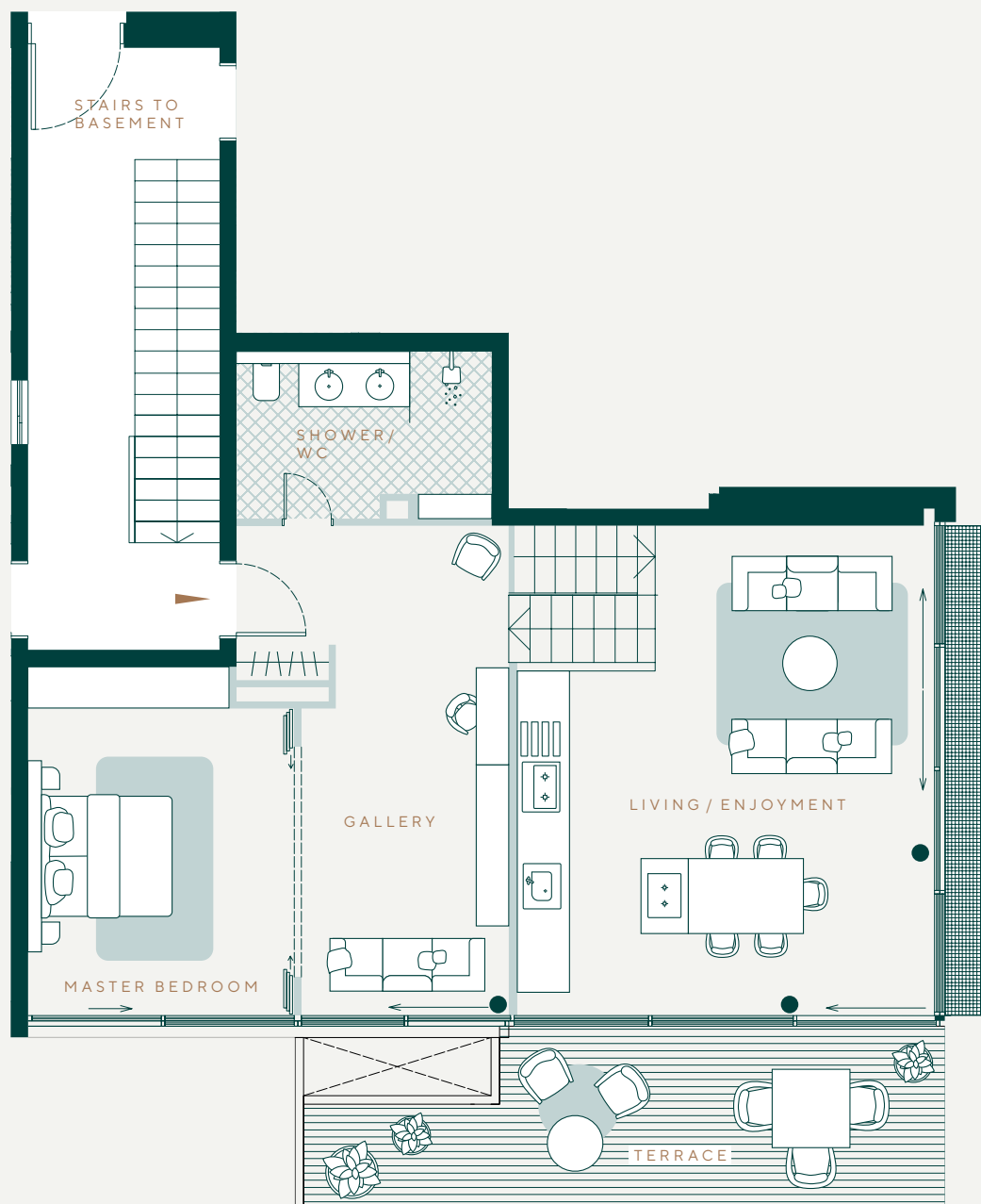
TANNENBERGALLEE 28
14055 BERLIN

BASEMENT FLOOR | TOTAL LIVING SPACE APPROX. 134.2 SQM

All details are approximate values and correspond to the building application planning and are subject to official approvals, static specifications and final measurements.



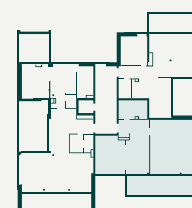
1 M 2 M



LOCATION IN PROPERTY



FLOOR PLAN



GF

APARTMENT N°2

TANNENBERGALLEE 28
14055 BERLIN

GROUND FLOOR | TOTAL LIVING SPACE APPROX. 134.2 SQM

All details are approximate values and correspond to the building application planning and are subject to official approvals, static specifications and final measurements.



1 M 2 M



A project by

cai invest GmbH

Taentzienstraße 17
10789 Berlin

+49 (0)30 23 63 50 00

info@cai-group.de