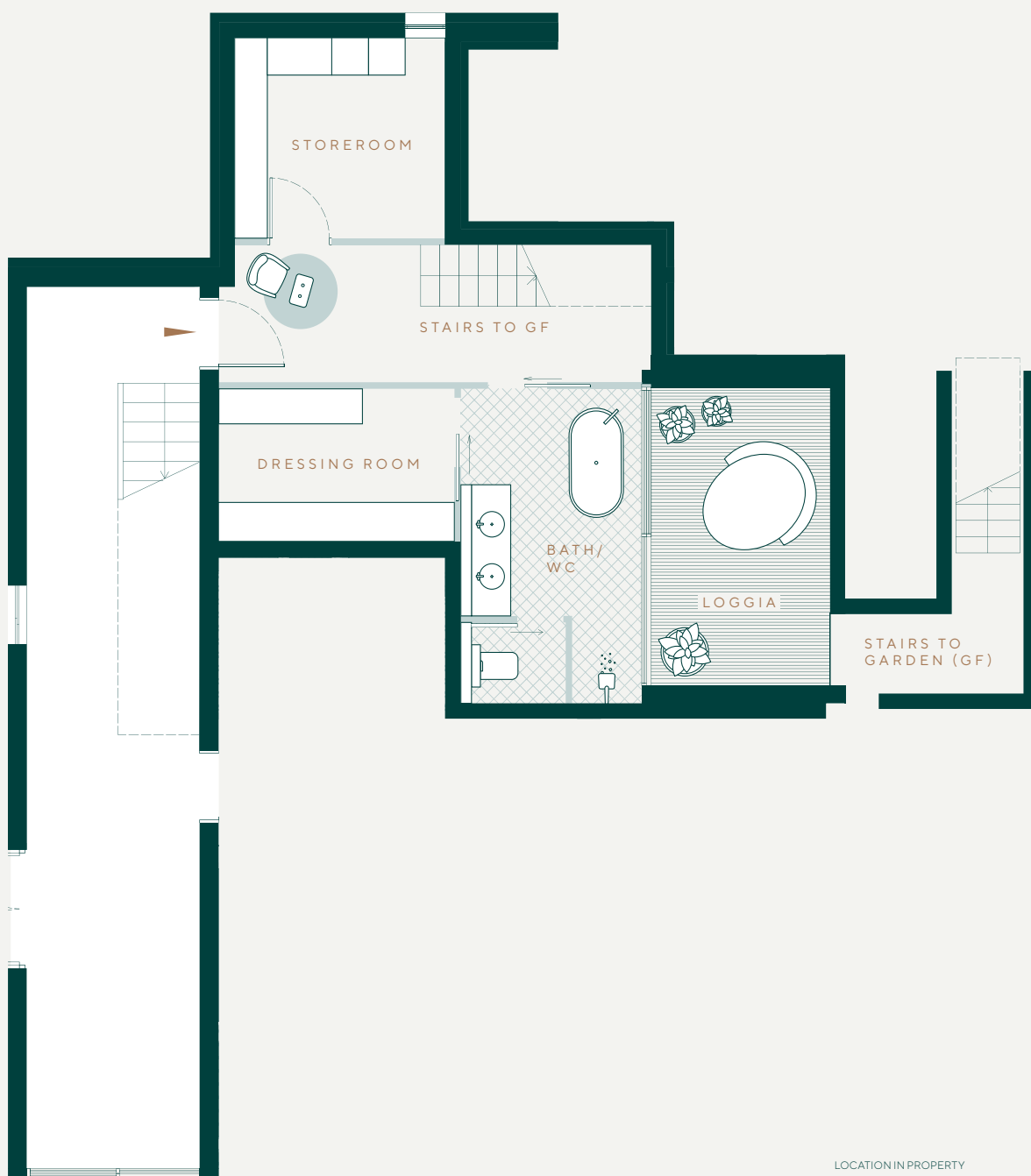




# VILLA TANNENBERG

BERLIN

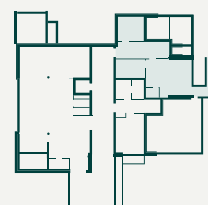
FLOOR PLANS



LOCATION IN PROPERTY



FLOOR PLAN



BSMT

## APARTMENT N°1

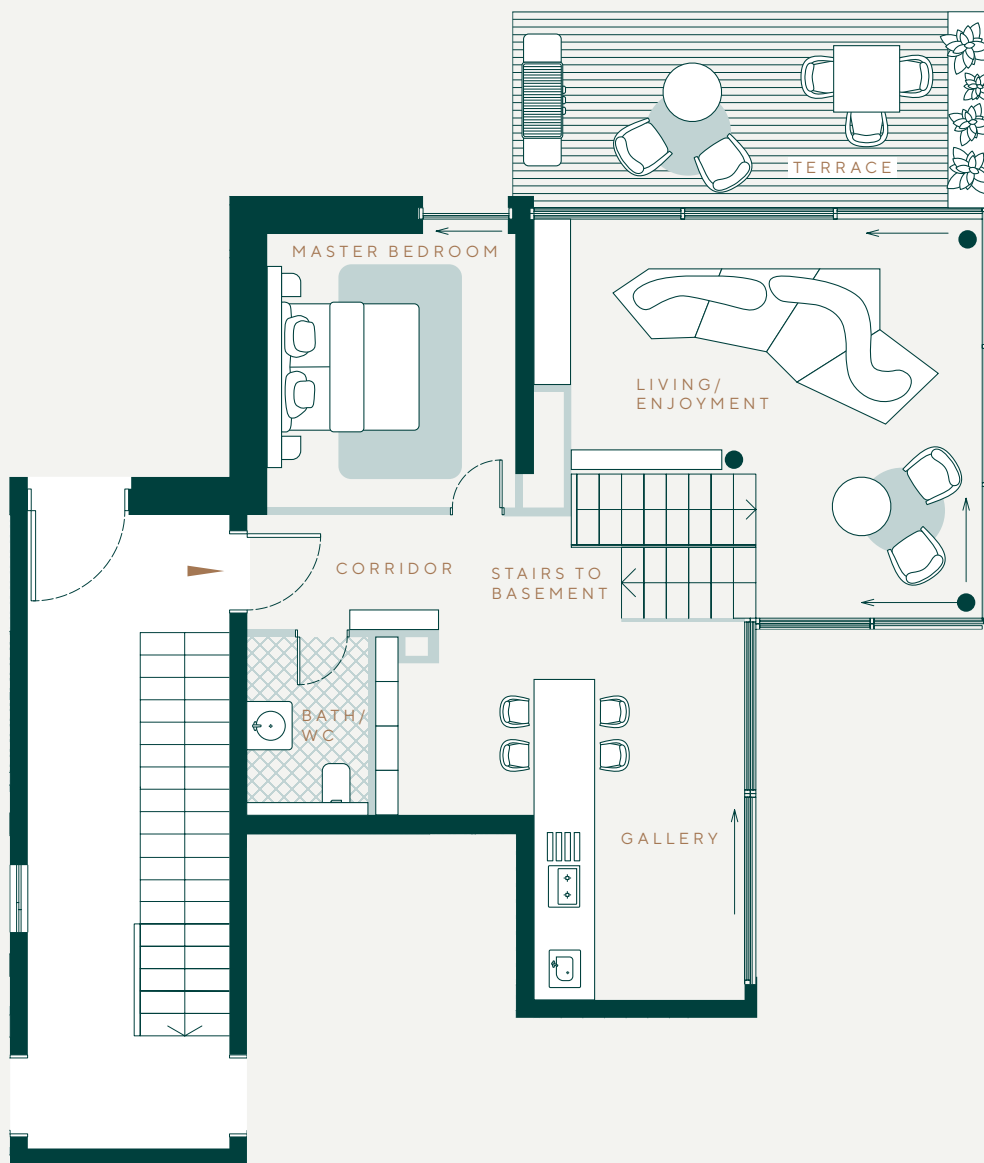
TANNENBERGALLEE 28  
14055 BERLIN

BASEMENT FLOOR | TOTAL LIVING SPACE APPROX. 130.3 SQM

All details are approximate values and correspond to the building application planning and are subject to official approvals, static specifications and final measurements.



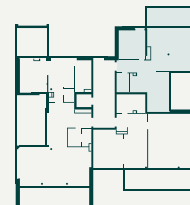
1 M 2 M



LOCATION IN PROPERTY



FLOOR PLAN



GF

## APARTMENT N°1

TANNENBERGALLEE 28  
14055 BERLIN

GROUND FLOOR | TOTAL LIVING SPACE APPROX. 130.3 SQM

All details are approximate values and correspond to the building application planning and are subject to official approvals, static specifications and final measurements.



1 M 2 M



A project by

**cai invest GmbH**

Taentzienstraße 17  
10789 Berlin

+49 (0)30 23 63 50 00

[info@cai-group.de](mailto:info@cai-group.de)